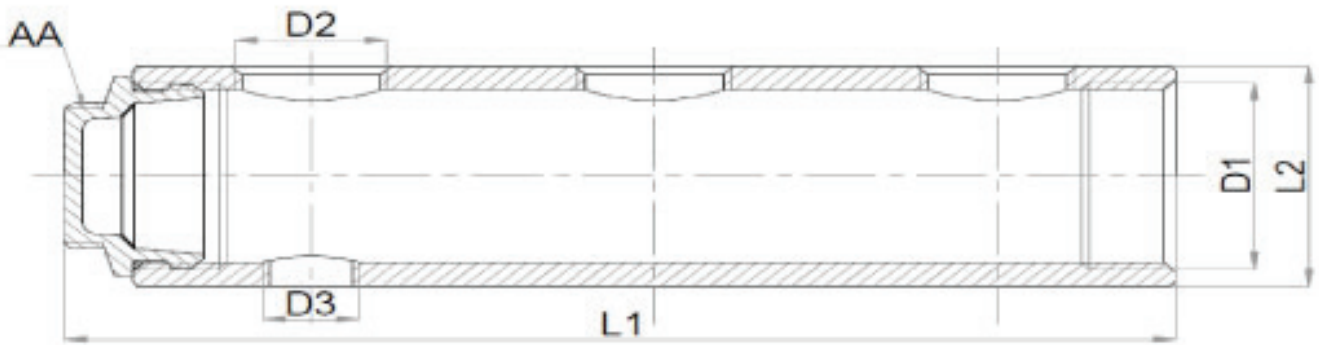


1" MANIFOLD PROFILE



TECHNICAL DATA SHEET

Product Name	1" Manifold Profile
Standard	TSE K
Max. Flow Temperature	90°C
Pressure Class	PN 10
Intended Use	Plumbing System



PRODUCT CODE -1802...

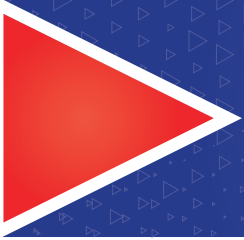
Dim.	582	583	584	585	586	587	588	589	590	591	592	593
D1	1"	1"	1"	1"	1"	1"	1"	1"	1"	1"	1"	1"
D2	1/2"	1/2"	1/2"	1/2"	1/2"	1/2"	1/2"	1/2"	1/2"	1/2"	1/2"	1/2"
D3	1/4"	1/4"	1/4"	1/4"	1/4"	1/4"	1/4"	1/4"	1/4"	1/4"	1/4"	1/4"
L1	103,6	150,6	197,6	244,6	291,6	338,6	385,6	432,6	479,6	523,6	573,6	620,6
L2	39	39	39	39	39	39	39	39	39	39	39	39
AA	24	24	24	24	24	24	24	24	24	24	24	24

MATERIAL PROPERTIES

BODY	BRASS (CW617N)/(CW614N)
COVER	BRASS (CW617N)/(CW614N)
GASKET - O RING	NBR / EPDM

SURFACE PROPERTIES (COATING)

BODY	NICKEL
COVER	NICKEL



1" MANIFOLD PROFILE

KAS[®]

INSTALLATION and OPERATING INSTRUCTION

- 1- Make sure there is no damage on the product may occur during transport and shipping. Before assembly do not unpack the product in order to prevent from the external effects.
- 2- Clean all kinds of contaminants before assembly.
- 3- Make sure that the thread length to be connected to the valve is not too short or too long than the thread length of the valve.
- 4- Keep the valve in closed position during installation. Install the valve with the appropriate tool from the side where you'll mount it.
- 5- **Use enough flax or plumping adhesive.**
- 6- Use the valve full open or full closed
- 7- While opening and closing the valve, follow the arrows on the handle.
- 8- Do not paint the valve, do not expose the valve with abrasive chemicals,
- 9- Do not open or close with any other tool and do not remove the handle.