

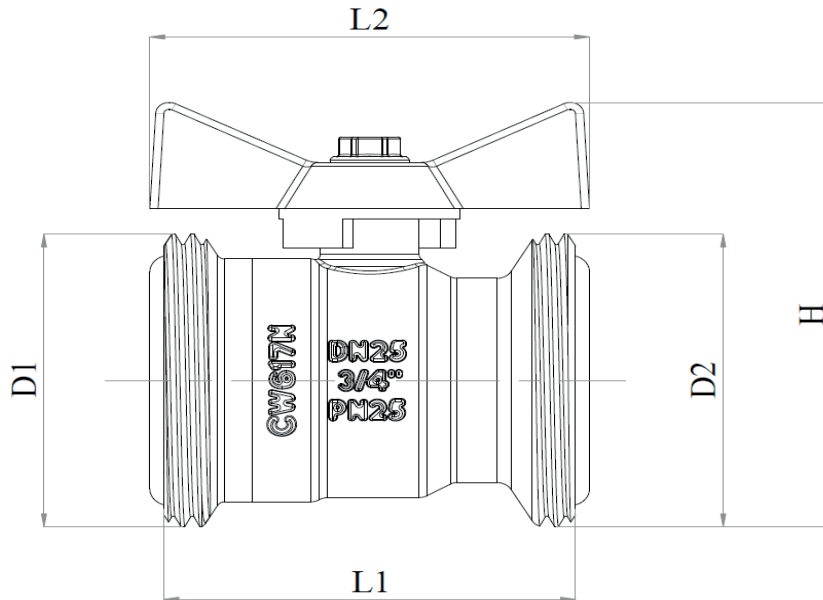
DOUBLE SIDED CONNECTION VALVE

KAS®



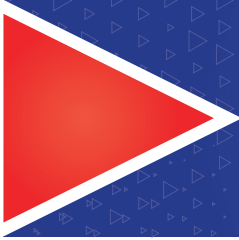
TECHNICAL DATA SHEET

Product Name	Double Sided Connection Valve
Working Temperature	-10°C / +100°C
Pressure Class	PN25
Intended Use	Installation Systems



DIMENSIONS

Code	20.06.001
DN	25
D1(thread)	1 1/4"
D2(thread)	1 1/4"
L1	50
L2	53,4
H	60



DOUBLE SIDED CONNECTION VALVE

KAS®

MATERIALs	
BODY	BRASS (CW617N)/(CW614N)
COVER	BRASS (CW617N)/(CW614N)
BALL	BRASS (CW617N)/(CW614N)
BALL TEFLON	PTFE (TEFLON)
O-RING	BRASS (CW617N)/(CW614N)
POLE	NBR
POLE ORING	NBR
HANDLE	ZAMAK
SCREW	STEEL

MATERIALs	
BODY	NICKEL
COVER	NICKEL
BALL	NICKEL / NICKEL + CHROME
UNION	NICKEL
HANDLE	PLASTIC (Farklı renk seçenekleri)

INSTALLATION and OPERATING INSTRUCTION

- 1- Do not unpack the valve until installation to prevent falling of any unwanted substance that may affect the working of valve.
- 2- Take measures against any possible damage that may occur during transport and shipment.
- 3- Clean away every unwanted substance in your system before installation.
- 4- Valve should be off position while installing.
- 5- Be careful that the thread length of the part that will be installed to the valve will not be too longer or too shorter than the thread length of the valve.
- 6- While installing, grab the valve by the appropriate tool from the across flats where you'll install it.
- 7- During installation do not use excessive adhesive or any unsuitable substance.
- 8- Use the valve fully open or fully closed position.
- 9- Do not paint the valve. Do not expose the valve with abrasive chemicals.
- 10- Do not use any other tools for opening or closing the valve and do not remove the handle.
- 11- In case of any damage or disorder, valve should be changed by authorities.
- 12- Complying with the installation and usage instruction is compulsory. Otherwise, the product will be cut of guarantee.
- 13- Do not forget to get the document of guarantee. This document is valid only with the related bill.